

Clifton North Area Committee Executive Summary

September 2012

Ward priorities – Progress update

Theme	Priority	Key Actions
SAFER	ASB at Varney Road shops area Young people hanging around Increased take up N Watch and Alert	High visibility patrols at peak times Raise awareness of services available for young people Sharing Alerts with local residents
NEIGHBOURHOODS	Parking issues Litter, Bulky waste, fly-tipping, dog fouling	Residents parking scheme now operating in Sunninghill / Rivergreen area. Parking bays on Glapton Lane provided and need to continue further on Glapton Lane. Parking issues in Wilford currently explored. Fly-tipping hotspots being cleared and notices being served on private land
FAMILIES	More facilities for younger children Support for teenagers	Programme of activities for children and young people. Events such as 'Picnic in Park' help to provide opportunities for all
HEALTH	Encourage healthier lifestyles Awareness raising and support on Mental Health issues	Changemakers, Clifton HWAG and others working on obesity, smoking, healthier lifestyles Carers Federation working with Clifton Mental Health Forum & partners, including NHS
WORKING	Training for local people Jobs for young adults Jobs and training Fairs	Jobs Fair staged 20 th July. 254 local residents attending. All the employers were impressed with the turn out and the skills and experience of local residents.

Community Engagement

Events Delivered

Event	Lead Partners	Date/Time	Venue
Jobs & Training Fair	Economic Development	20/07/12	Clifton Cornerstone
Crime In Clifton Meeting	Police	29/08/12	Clifton Cornerstone
'Picnic in The Park' Game On	Parks	14/08/12	Clifton Playing Fields
Silverdale Park – Phase 2 grand opening	Parks & Silverdale Community Centre	31/08/12	Silverdale Recreational Park
Changes to Council Tax Benefits - consultation	Nottingham City Council	17/09/12 & 18/09/12	Clifton Cornerstone

Future Events and Activities Planned

Event	Lead Partners	Date/Time	Venue
Older Persons Event	NHS Health Promotion	26/11/12 10am to 2pm	Clifton Leisure Centre
Budget Consultation	Nottingham City Council	03/12/12 6.30pm	Clifton Cornerstone
Christmas Lights Switch-on	Nottingham City Council	07/12/12 Lights switch 4.45pm	Clifton District Centre
Ward Forum – Clifton estate	Locality Management & Police	To be confirmed	To be confirmed

Community Engagement

Ward Walks

Area/Estate	Date/Time	Meeting Point
Rivergreen	18/09/12 - 10.00am	Clifton Cornerstone
Silverdale estate	16/10/12 - 10.00am	Silverdale Community Centre
Rivergreen	27/11/12 - 10.00am	Clifton Cornerstone
Wilford	22/01/13 - 10.00am	Outside Co-op, Wilford Lane

Community Meetings

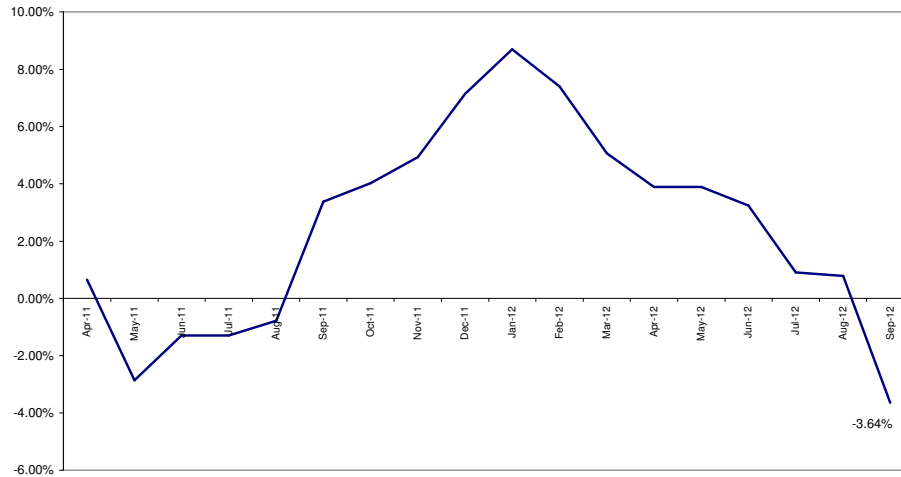
Group	Date	Venue
Wilford Community Group	17/09/12 – 7.30pm	Wilford Social Club
Silverdale Community Association – AGM	9/10/12 – 7.00pm	Silverdale Community Centre
Wilford Community Group	15/10/12 – 7.30pm	Wilford Social Club
Wilford Community Group	19/11/12 – 7.30pm	Wilford Social Club
Silverdale LAG	27/11/12 - 7.00pm	Silverdale Community Centre

Finance

- **Ward Councillor Budgets**
Total amount allocated this period £ 1,700
Budget remaining unallocated £ 27,212 (inc. of 2012-2013 allocation)
- **Area Capital Fund**
Total amount allocated this period £ 25,000
Budget remaining unallocated £ 20,532 (inc. of 2012-2013 allocation)
- **Others – Section 106, NCH Environmentals, Other Funding**
None this period

Crime

All Crime in Clifton North -
% Change over 2010/11 Baseline (Rolling 12 Month)

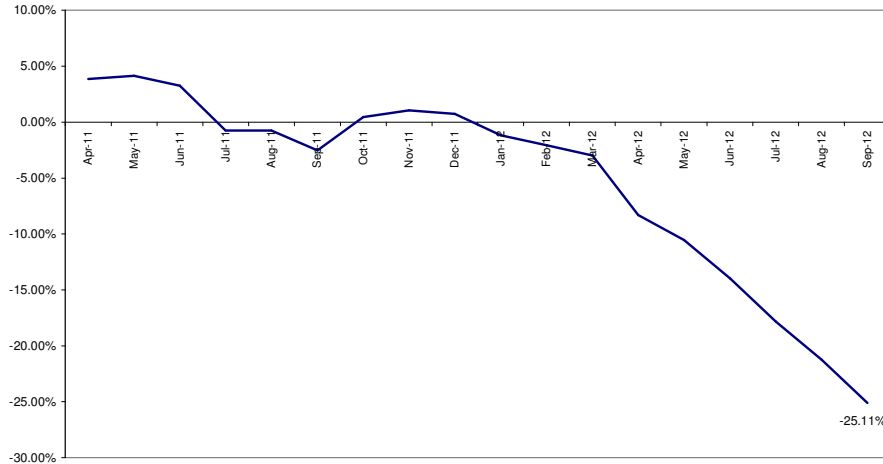


*Refers to September 2012 compared to September 2011

- All Crime in Clifton North is showing a **decrease of 41% (34 crimes)** compared to September 2011.
- All Crime is down by **16%** year to date compared to 2011/12 figures.
- The above graph indicates that Clifton North's performance is down **-4%** against the long term 2010/11 baseline. The steady decline observed in All Crime this calendar year has also been highlighted.
- Clifton North is **significantly below the city average** for All Crime in terms of rate per 1000 of the population.

All ASB

All ASB in Clifton North -
% Change over 2010/11 Baseline (Rolling 12 Month)



Red		
Amber		
Green*	26 less calls	-52.00%

*Refers to September 2012 compared to September 2011

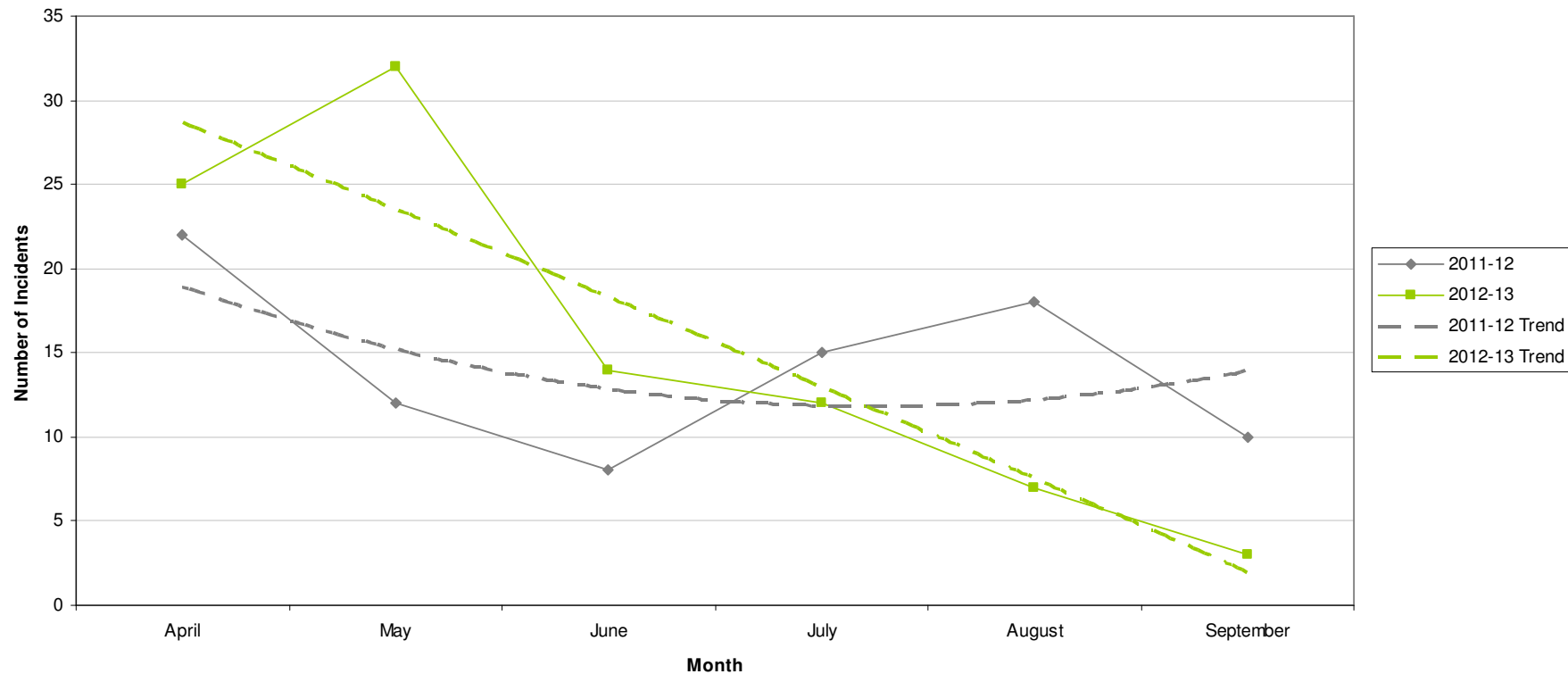
- For the month of September 2012 compared to September 2011, Clifton North is showing a significant reduction (**-52%, 26 calls**) of calls of All ASB.
- Year to date, Clifton North has experienced a **-41%** decrease in ASB calls compared to 2011/12 figures.
- Clifton North is showing a reduction of **-25%** against a long term 2010/11 baseline.
- The majority (67%) of ASB calls received in September 2012 for Clifton North fell into the **'Nuisance'** category. This finding is in line with the Division as a whole.

Graffiti Reports

RED		
AMBER		
GREEN	7 fewer reports	-70%

- All data refers to a comparison with the previous year's month
- It is proposed that performance over time graphs be used for each indicator
- Historic data for comparison is not available for dog fouling

Incidents of Graffiti

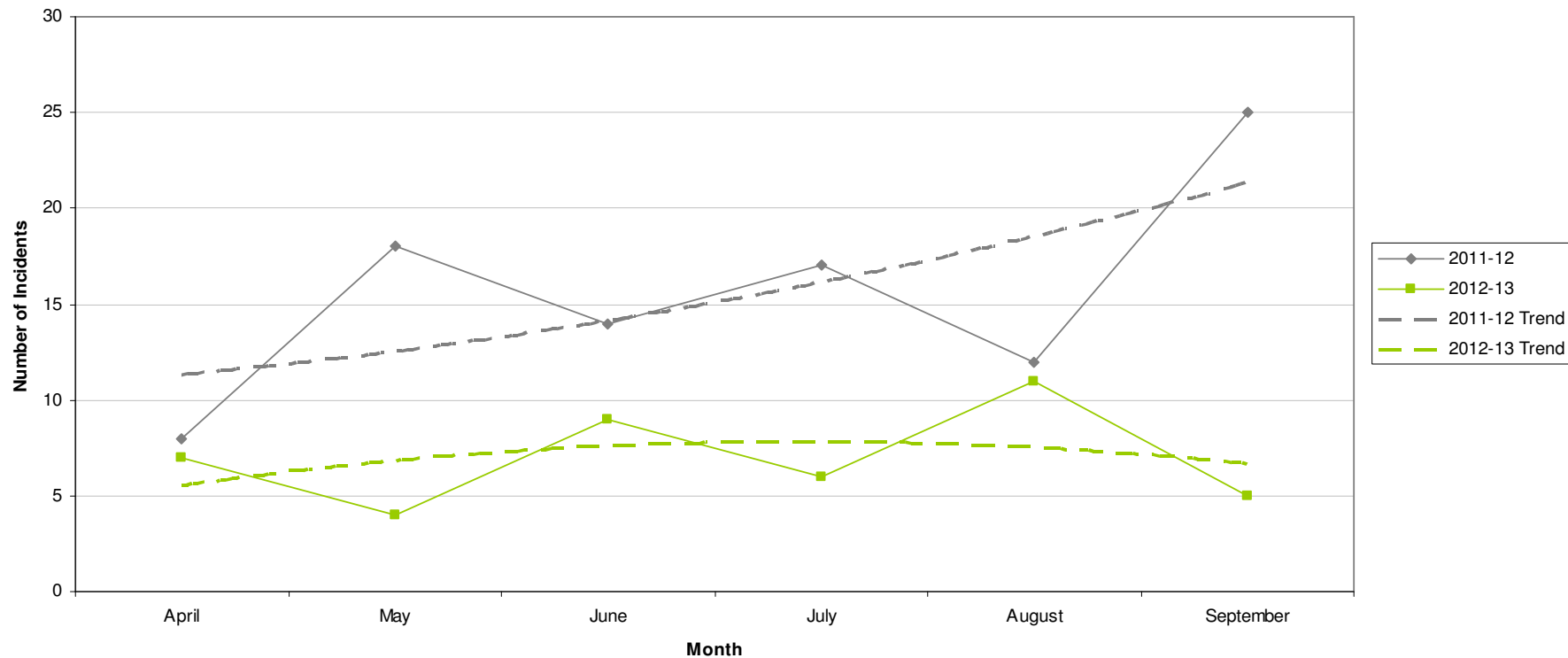


Fly Tipping

RED		
AMBER		
GREEN	20 fewer reports	-80%

- All data refers to a comparison with the previous year's month
- It is proposed that performance over time graphs be used for each indicator
- Historic data for comparison is not available for dog fouling

Incidents of Fly Tipping

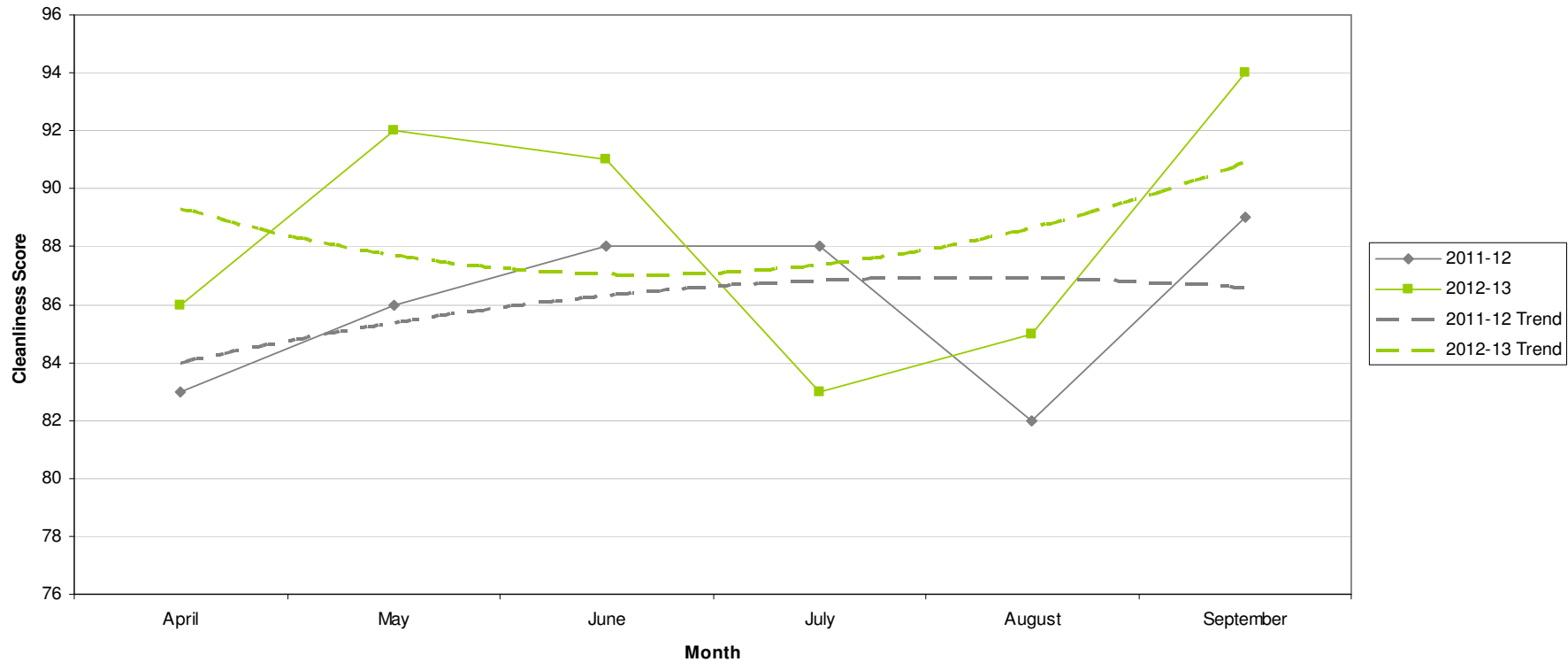


Cleanliness Index

RED		
AMBER		
GREEN	94	5 point increase

- All data refers to a comparison with the previous year's month
- It is proposed that performance over time graphs be used for each indicator
- Historic data for comparison is not available for dog fouling

Cleanliness Index



Unemployment Rate

Ward	Aug-12			Change in last month		Change in last year	
	Number	Rate	City Rank	Number	%	Number	%
Arboretum	830	7	9	12	1.5	86	11.6
Aspley	1,197	10.6	1	15	1.3	57	5
Basford	730	6.6	11	21	3	25	3.5
Berridge	1,090	7.5	6	17	1.6	115	11.8
Bestwood	989	8.7	4	-26	-2.6	-19	-1.9
Bilborough	762	7.3	7	-36	-4.5	6	0.8
Bridge	756	7.2	8	6	0.8	15	2
Bulwell	1,045	9.6	2	-4	-0.4	32	3.2
Bulwell Forest	444	4.9	15	-12	-2.6	-5	-1.1
Clifton North	381	4.3	16	-14	-3.5	27	7.6
Clifton South	506	5.8	12	12	2.4	-11	-2.1
Dales	883	7.6	5	-10	-1.1	8	0.9
Dunkirk and Lenton	262	2.4	19	-5	-1.9	-27	-9.3
Leen Valley	351	5	14	13	3.8	26	8
Mapperley	750	6.7	10	31	4.3	8	1.1
Radford and Park	776	4.1	17	-19	-2.4	36	4.9
Sherwood	552	5.1	13	-19	-3.3	-71	-11.4
St Ann's	1,242	9	3	13	1.1	29	2.4
Wollaton East and Lenton Abbey	144	1.5	20	9	6.7	4	2.9
Wollaton West	262	2.8	18	29	12.4	25	10.5

Source: ONS claimant count August 2012 (from Nomis)

This is an edited version of a report produced by: Geoff Oxendale, Information and Research Officer, Nottingham City Council

Housing



Clifton North Ward

Empty properties - Clifton North Ward

Indicator	Current Target	2010/11	2011/12	2012/13		
		Value	Value	Value	Status	Trend
Average void re-let time for Clifton North Ward	26	15.75	19	24.11		
Lettable voids Clifton North Ward		3	6	9		
Empty properties awaiting decommission in Clifton North Ward		0	0	3		

Estate star ratings (from Tenant Service Inspectors)

Indicator	2010/11		2011/12		2012/13		
	Value	Status	Value	Status	Value	Status	Trend
Estate star rating - Clifton	3 Star		3 Star		3 Star		

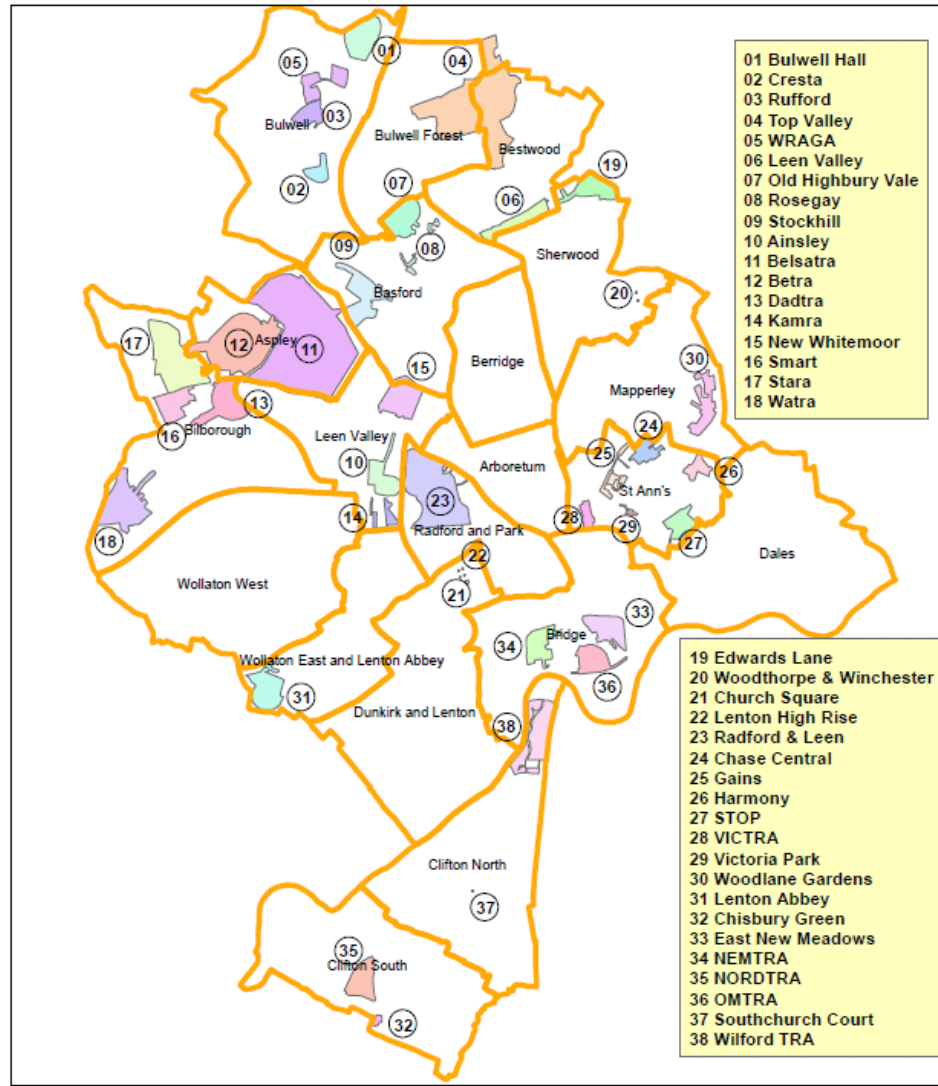
Rent Collection - Clifton

Indicator	Current Target	2010/11	2011/12	2012/13		
		Value	Value	Value	Status	Trend
Rent charged that has been collected - Clifton office area	100%	100.9%	101.4%	99.8%		

Data prepared by Nottingham City Homes Performance Team

For more information please contact Tricia Quinn, Performance Review Manager on 0115 9157365 or Marcus Parton, Performance Review Officer 0115 915715

Housing



Map of Tennant and Resident Associations by Ward

Community Protection

In Your Ward in the last month there were the following court outcomes

- 1 Injunction – for Drugs
- 1 Works In Default – for Environment

Data has been received from Community Protection and where postcodes have been listed these have been geo-coded and mapped to determine the Ward. All addresses relate to the address of the Perpetrator.

FPNs are not currently available at Ward level.

Methodology

Crime Data and ASB calls have been extracted from the Police systems and mapped to ascertain which Ward they occurred in.

Due to the dates of the meetings, data for all Wards was extracted at the same time at the start of the month - and as such is not officially 'validated' data.

Where possible the most recent data is used, although for some areas this may be a month further in arrears.

Discussions continue with other agencies regarding what further data can be included.